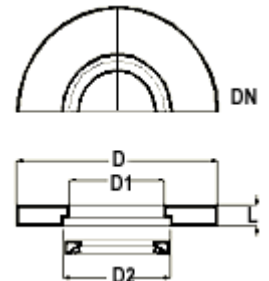


## Industrial Glass - [Couplings](#) - Adaptor Backing Flanges

### ADAPTOR BACKING FLANGES

Adaptor backing flanges are used to couple a glass end to the flange having different bolt configuration. These flanges are made of cast iron and are supplied with inserts. These are particularly used to fit a glass equipment on a non-glass equipment like Glass-lined Reactor etc. Adaptor backing flanges are generally supplied undrilled. However, if specified, these can be supplied drilled as per "Table E", "Table F" and "ASA150" standards.

Undrilled flanges						Drilled to Table E		
Cat.Ref.	DN	D	D1	D2	L	Cat.Ref.	PCD	n x dØ
CFA1	25	115	43	51	10	CFA1/E	82	4 x 12Ø
CFA1.5	40	150	58	66	10	CFA1.5/E	98	4 x 12Ø
CFA2	50	165	70	81	12	CFA2/E	114	4 x 16Ø
CFA3	80	200	101	112	12	CFA3/E	146	4 x 16Ø
CFA4	100	220	134	148	12	CFA4/E	178	8 x 16Ø
CFA6	150	285	186	196	15	CFA6/E	235	8 x 19Ø
CFA9	225	395	260	282	15	CFA9/E	324	12 x 19Ø
CFA12	300	445	342	363	18	CFA12/E	406	12 x 23Ø



Drilled to Table F			Drilled to ASA 150		
Cat. Ref.	PCD	n x dØ	Cat. Ref.	PCD	n x dØ
CFA1/F	87	4 x 16Ø	CFA1/A	79	4 x 12Ø
CFA1.5/F	105	4 x 16Ø	CFA1.5/A	98	4 x 12Ø
CFA2/F	127	4 x 16Ø	CFA2/A	121	4 x 16Ø
CFA3/F	165	8 x 16Ø	CFA3/A	152	4 x 16Ø
CFA4/F	190	8 x 16Ø	CFA4/A	190	8 x 16Ø
CFA6/F	260	12 x 19Ø	CFA6/A	241	8 x 19Ø
CFA9/F	356	12 x 23Ø	CFA9/A	298	8 x 19Ø
CFA12/F	438	16 x 23Ø	CFA12/A	432	12 x 23Ø

\* marked items are available fast.

