

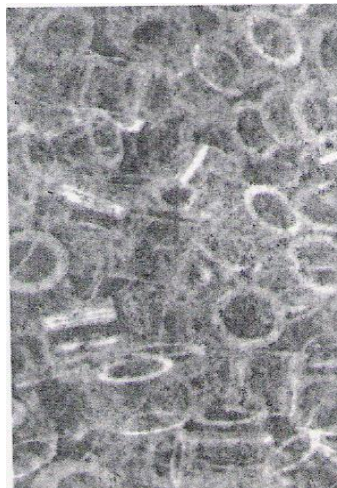
Industrial Glass - [Column Components](#) - Column Packing

**COLUMN PACKING - RASCHIG RINGS**

Raschig rings upto 25mm are of Neutral glass. 40mm and 50mm raschig rings are available only in Borosilicate glass.

Cat. Ref.	Size	Bulk Density Kg/Ltr	Specific Surface m <sup>2</sup> /m <sup>3</sup>	Glass
FC9	9x9	0.6	500	Neutral
FC12	12x12	0.5	400	Neutral
FC15*	15x15	0.4	300	Neutral
FC25*	25x25	0.3	200	Neutral
FCB40	40x40	0.3	160	Borosilicate
FCB50	50x50	0.32	120	Borosilicate

Packings require for various pipe sections (Kgs.)



Pipe Section	Packing size						
	Vol (L)	FC9	FC12	FC15	FC25	FCB40	FCB50
PS3/1000	5	3	3	2	-	-	-
PS4/1000	8	-	4	3	3	-	-
PS6/1000	18	-	9	7	7	-	-
PS9/1000	37	-	-	15	15	15	-
PS12/1000	66	-	-	17	30	25	-
PS16/1000	125	-	-	-	65	50	53
PS18/1000	165	-	-	-	90	65	70
PS24/1000	295	-	-	-	-	115	125

### Notes of use of Column Packing

- Due to their low bulk densities, Glass Raschig rings are particularly suitable for packing glass columns.
- Generally, the ratio of Column diameter to packing diameter should not be less than 8:1
- When using smaller packing size, a small layer of larger packing should be used on packing support, to prevent the smaller packing falling through.
- In vacuum application and applications involving high vapour velocities, packing may be lifted and may damage to other parts. To prevent this, a packing retainer (PTFE perforated plates) should be used above the packed section.

\* marked items are available fast.